

# ALC

## Aluminium Lighting Company

Aberdeen City's use of Aluminium Lighting Columns  
– a case study





# Agenda

- Background
- Proposal
- Implementation
- Benefits
- Current Situation

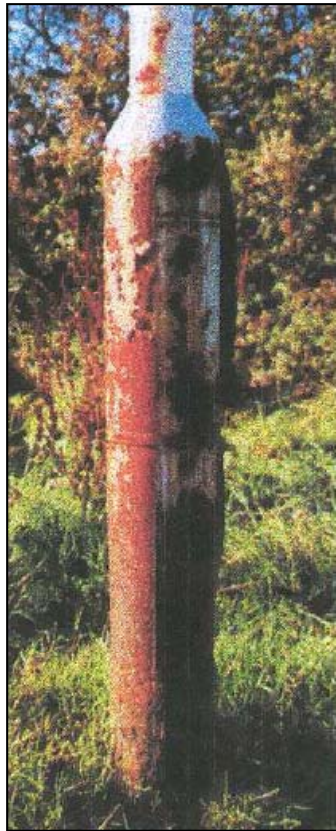
A white street lamp is positioned on the left side of a dark blue background. A light blue cone of light emanates from the lamp's head, extending downwards and outwards. The word "Background" is written in white, bold, sans-serif font across the middle of the light blue cone.

**Background**

Clearly better from any angle

ALC

## Corrosion free



Clearly better from any angle

A white spotlight icon with a blue beam of light, positioned to the left of the title.

# Background

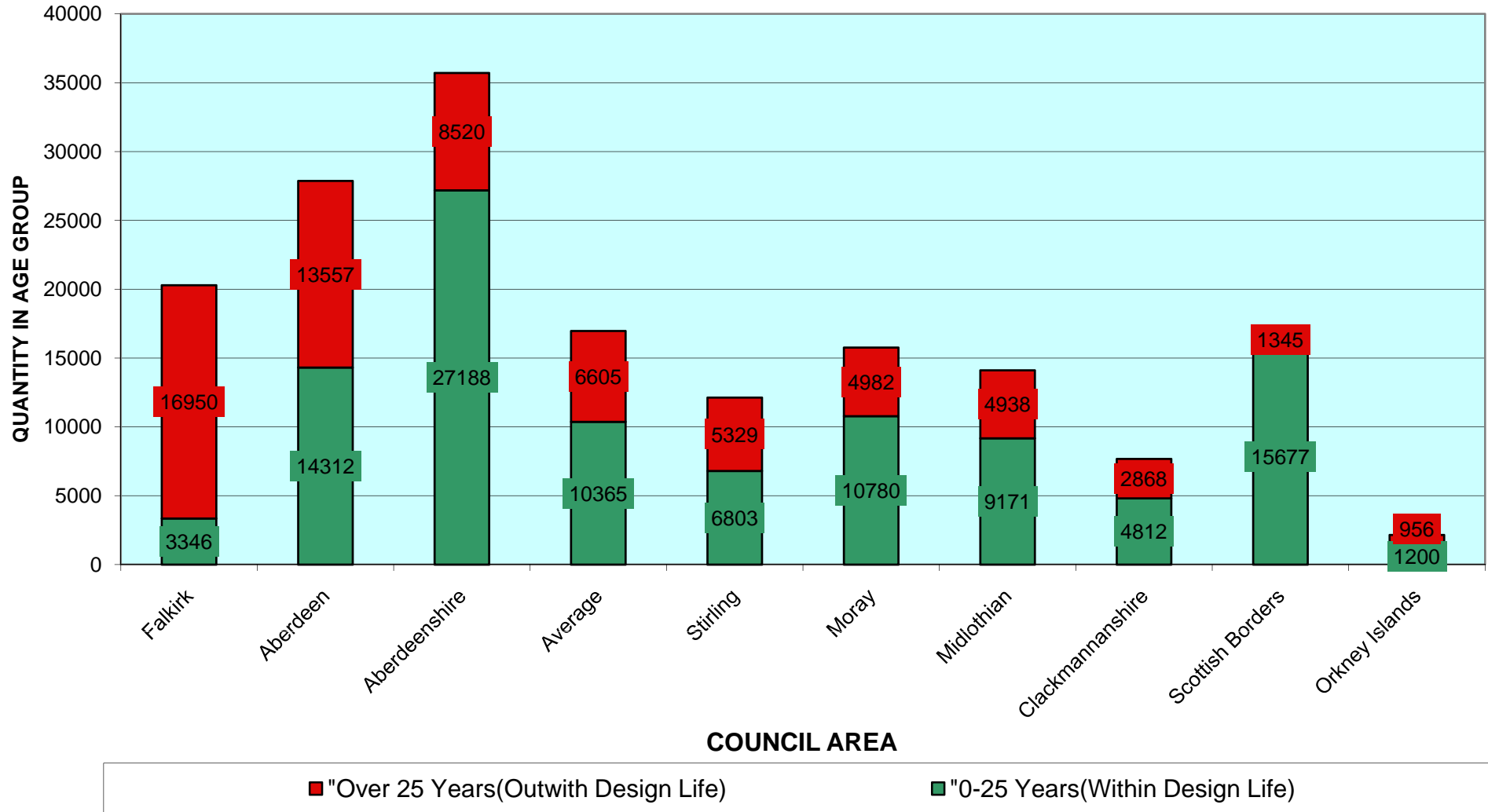
- **Column population**
- **Statutory performance indicator**
- **Immediate action**
- **Financial situation**

Clearly better from any angle

ALC

# Background

## SCOTTISH AUTHORITIES - LIGHTING COLUMN AGE PROFILES



Clearly better from any angle



A white spotlight icon with a blue beam of light, positioned to the left of the title.

# Background

- **Column population**
- **Statutory performance indicator**
- **Immediate action**
- **Financial situation**

Clearly better from any angle

ALC

A white street lamp stands on the left side of a dark blue background. A light blue cone of light emanates from the lamp's head, widening as it descends. The word "Proposal" is written in white, bold, sans-serif font across the middle of the light blue cone.

**Proposal**

Clearly better from any angle

ALC



A graphic of a spotlight beam shining down on the word "Proposal".

# Proposal

- **Options**
- **Equipment evaluation**
- **Business case**
- **Funding options**

Clearly better from any angle

ALC

A white spotlight icon with a blue glow, positioned to the left of the word 'Proposal'.

# Proposal

- Experience
- Right people
- Process & Systems
- Nedal

Clearly better from any angle

ALC

A graphic of a spotlight beam shining down on the word 'Proposal'.

# Proposal

- **Options**
- **Equipment evaluation**
- **Business case**
- **Funding options**

Clearly better from any angle

ALC

A white street lamp is positioned on the left side of a dark blue background. A light blue cone of light emanates from the lamp's head, extending towards the right. The word "Implementation" is written in white, bold, sans-serif font across the middle of the light blue cone.

# Implementation

Clearly better from any angle

ALC

A graphic of a spotlight beam shining down from the top left corner of the slide.

# Implementation

- **Tender**
- **Planned replacement program**
- **Issues**

Clearly better from any angle

ALC



# Benefits

Clearly better from any angle

ALC

A graphic of a spotlight beam shining down on the word 'Benefits'.

# Benefits

- **Whole life costs**
- **Minimal maintenance**
- **Extended life**
- **Environmental**
- **Disruption**
- **Passive safety**

Clearly better from any angle

ALC

**ALUMINIUM LIGHTING COLUMNS**

**8 Metre**

**COLUMN REPLACEMENT COMPARISON WITH STEEL (WHOLE OF LIFE COSTS OVER A 50 YEAR CYCLE)**

Based on industry standard design life of 25 years for steel columns

ITEM	DESCRIPTION	STEEL COLUMN			ALUMINIUM COLUMN		
		RATE	No. EVENTS (50 year cycle)	TOTAL COST (50 year cycle)	RATE	No. EVENTS (50 year cycle)	TOTAL COST (50 year cycle)
<b>CAPITAL INSTALLATION COSTS</b>							
1	Supply lighting column	£190.00	2	£380.00	£325.00	1	£325.00
2	Erect lighting column	£135.00	2	£270.00	£135.00	1	£135.00
3	Connection costs (Jointing Work)	£250.00	2	£500.00	£250.00	1	£250.00
4	Supply Lantern (25 year life)	£130.00	2	£260.00	£130.00	2	£260.00
5	Remove old column to tip/scrap	£130.00	2	£260.00	£130.00	1	£130.00
6	Fit and wire lantern	£30.00	2	£60.00	£30.00	2	£60.00
7	Joint pit	£140.00	2	£280.00	£140.00	1	£140.00
8	Reinstatement (Bitmac Footway 1.5m <sup>2</sup> )	£75.00	2	£150.00	£75.00	1	£75.00
<b>TOTAL CAPITAL COSTS</b>				<b>£2,160.00</b>			<b>£1,375.00</b>
<b>ROUTINE MAINTENANCE COSTS</b>							
1	Cleaning & Lamp Change (3 Year Cycle)	£25.00	17	£425.00	£25.00	17	£425.00
2	Electrical Testing (5 Year Cycle)	£26.00	10	£260.00	£26.00	10	£260.00
3	Structural Testing (5 Year Cycle)	£25.00	10	£250.00	£0.00	0	£0.00
4	Column Repainting (7 Year Cycle)	£60.00	7	£420.00	£0.00	0	£0.00
<b>TOTAL MAINTENANCE COSTS</b>				<b>£1,355.00</b>			<b>£685.00</b>
<b>TOTAL 50 YEAR COSTS</b>				<b>£3,515.00</b>			<b>£2,060.00</b>
<b>SAVING (Steel - Aluminium Costs)</b>							<b>£1,455.00</b>
<b>EQUIVALENT ANNUAL SAVING</b>							<b>£29.10</b>
<b>ADDITIONAL CAPITAL COST OF COLUMN</b>							<b>£135.00</b>
<b>PAY BACK PERIOD IN YEARS (Extra capital/Annual Savings)</b>							<b>4.64</b>



A graphic of a spotlight beam shining down from the top left corner of the slide, illuminating the word 'Benefits'.

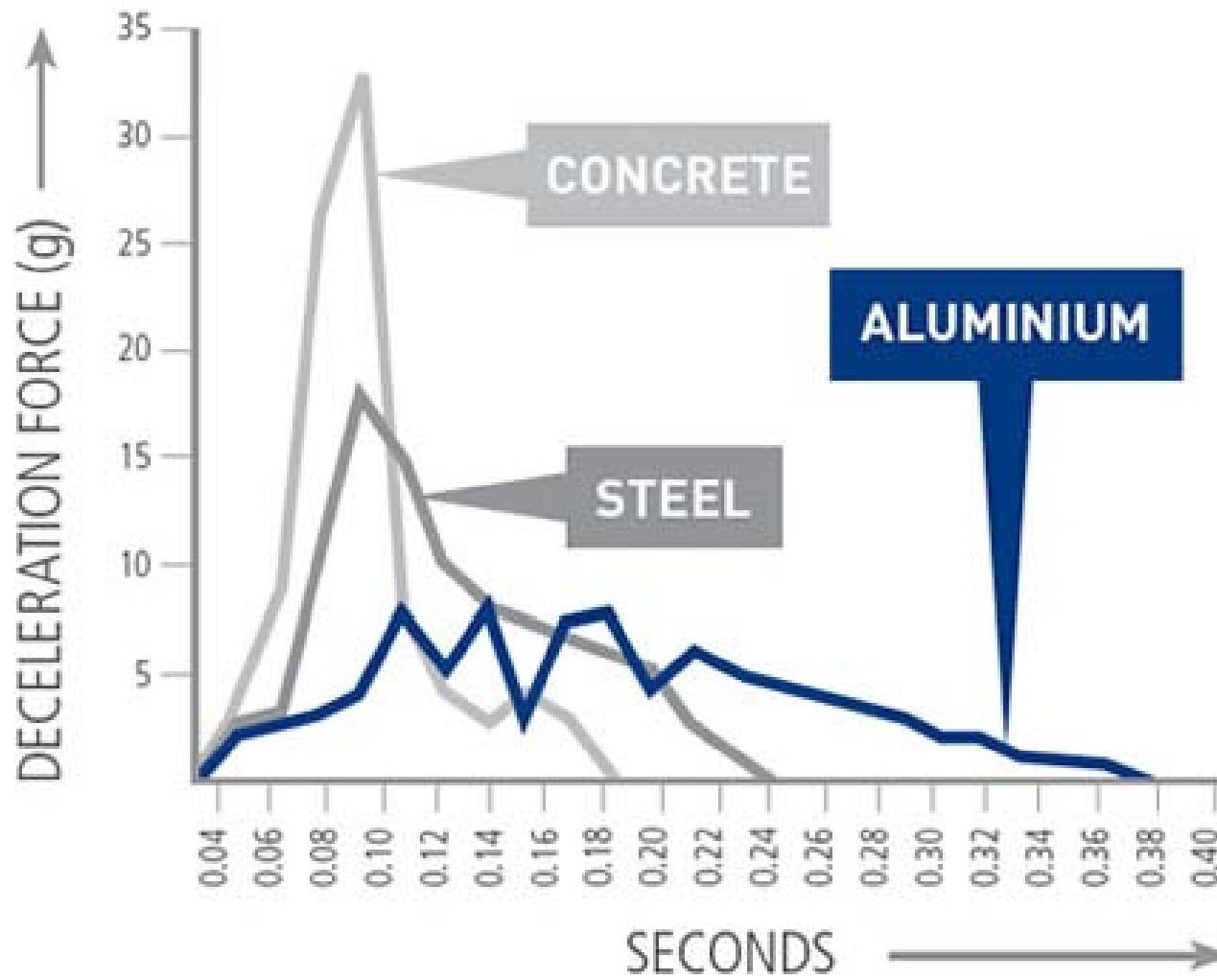
# Benefits

- **Whole life costs**
- **Minimal maintenance**
- **Extended life**
- **Environmental**
- **Disruption**
- **Passive safety**

Clearly better from any angle

ALC

# Benefits



Clearly better from any angle

# Benefits

## Passive safety



[www.aluminium-lighting.com/downloads/eccertificatEOFconformity.pdf](http://www.aluminium-lighting.com/downloads/eccertificatEOFconformity.pdf)

Clearly better from any angle

ALC



**Current situation**

Clearly better from any angle

ALC



# Current situation

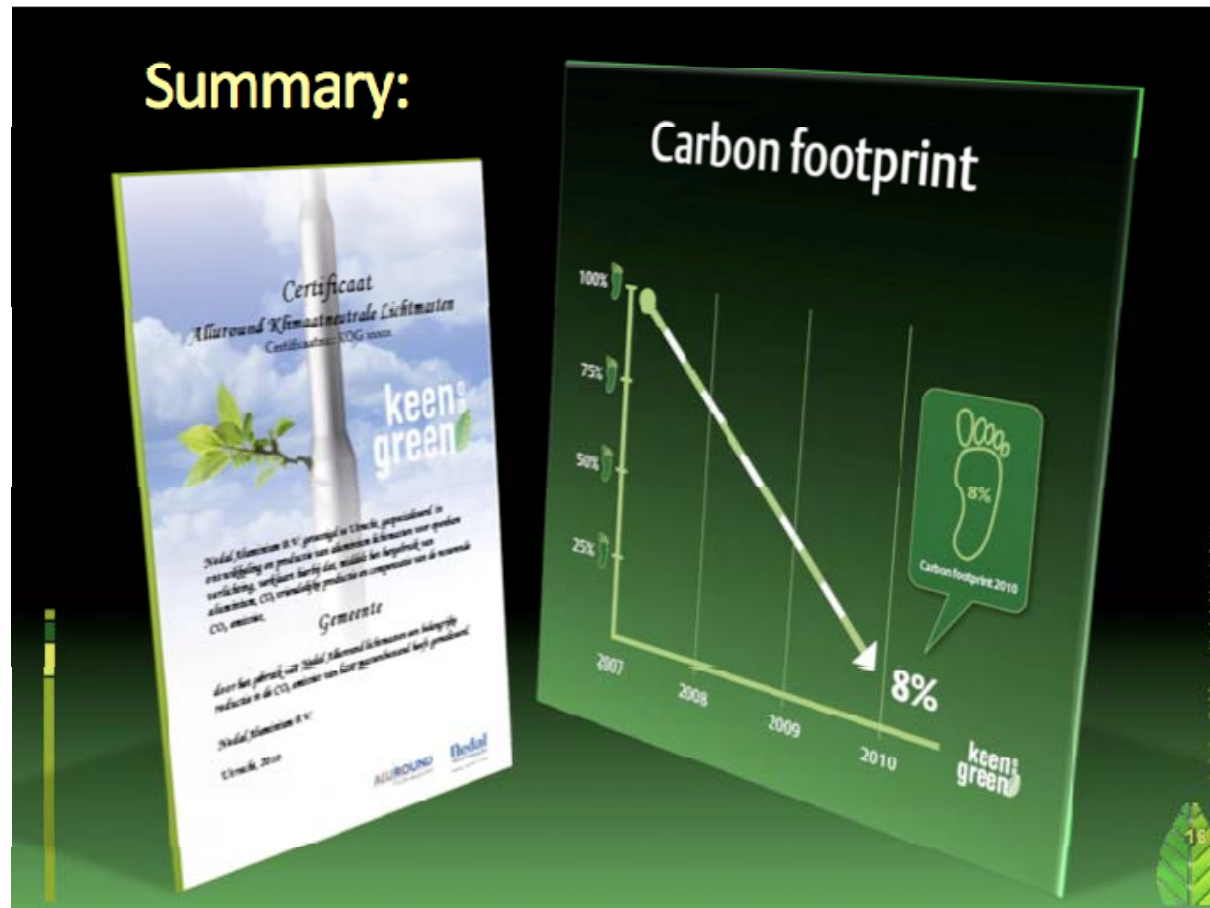
- **Column profile**
- **Specification**
- **Product improvement**
- **Peers**

Clearly better from any angle

ALC

# Current situation

## Green



Clearly better from any angle

A white spotlight icon with a blue beam of light shining down from the top left corner of the dark blue header bar.

# Current situation

- **Column profile**
- **Specification**
- **Product improvement**
- **Peers**

Clearly better from any angle

ALC

# Thank you

# Questions ?

**Aluminium Lighting Company Limited**

Croeserw Industrial Estate, Eastern Avenue, Cymmer, Port Talbot SA13 3PB

T: 01639 852502 | F: 01639 852263 | E: [sales@alulight.co.uk](mailto:sales@alulight.co.uk)

Clearly better from any angle

ALC